



Environmental MRSA#1719/MRSR#1916



CORPORATE CAPABILITIES

Developing cost-effective solutions to your building envelope problems.



CORPORATE OVERVIEW

US Building Consultants, Inc. (USBCI) is unique. The services our firm offers are not the kind of engineering or consulting services typical in the industry today. Our expertise is grounded in nearly three decades of experience with large-scale waterproofing, engineering, restoration, and construction management projects.

Our clients know that with major water intrusion issues, toxic mold problems, and construction litigation becoming more prevalent, USBCI offers valuable and unique services for the construction industry. Our firm is known for its formulated protocols that incorporate forensic inspection, testing, and analysis.

USBCI is the company that can take your project from conception to completion while staying within budget. Our employees have extensive training and certification related to engineering, forensic investigations, consulting, construction management, remediation, and the construction industry in general.

Clients rely on USBCI to diagnose their building envelope problems accurately; develop a solution; provide design plans, specifications, and bid documents; select qualified waterproofing and restoration contractors to implement the solution; and manage the project successfully to completion and final sign-off.

Unique to USBCI is our design-build restoration program, which pulls from decades of forensic investigation and construction restoration experience to deliver a complete building envelope system, free of leaks and defects.

The next time you have water intrusion, mold, engineering, or construction problems, call the professionals at USBCI to get the job done efficiently and successfully the first time.



INTERNSHIPS

USBCI believes in the value of education as a foundation for experience and has worked to create an effective in-house internship program. The program, which has provided thousands of dollars in scholarships to local college students, fosters experiential learning through participation in business meetings, onsite job visits, and team projects.



COMMUNITY INVOLVEMENT

In addition to the internship program, USBCI is involved with many local organizations, schools and charities, including the University of Florida, Santa Fe College, and the Wounded Warrior Project. Stemming from a belief that community involvement fosters the creation of long-lasting connections and growth of business, USBCI continues to cultivate its local partnerships.



BESI TRAINING & CERTIFICATION

In order to remain a leader in the industry, USBCI created an affiliation with the Building Envelope Science Institute (BESI). BESI is a specialized institute dedicated to the advancement of education specifically designed for the construction industry. BESI provides the highest quality training, certification programs, and resources for successful building envelope construction, maintenance, and restoration.



US BUILDING LABORATORIES

A vital part of the USBCI family of companies, USBLI was formed to provide solutions that are relevant to the construction and environmental industries, such as providing environmental analysis; energy testing; ASTM testing of construction materials; chamber testing; Chinese Drywall testing; mockup testing for roofs, walls, doors, and windows; forensic analysis; and scientific research and development.

EXECUTIVE LEADERSHIP

The greatest companies in the world are built on a solid foundation of experienced leaders with the wisdom to take their businesses to the top. At USBCI, our leadership is comprised of a specialized variety of certified experts in a multitude of fields, which gives us the unique ability to tackle any job with relative ease. Our diversity puts us at the forefront of an industry known for specialty services, providing us with a broad range of capabilities not typical of similar firms.



SCOTT "SPIDERMAN" MULHOLLAND, CGC BEC CMR CMA CIEC

Principal – CEO

Scott "Spiderman" Mulholland is a construction expert with over 4000 building envelope investigations for construction failures, latent defects, water intrusion, toxic molds, and associated building cladding and roofing failures. Mr. Mulholland has almost three decades of experience in the construction industry, primarily in commercial buildings, as well as 15 years of experience as construction litigation expert witness. He has been a construction consultant in approximately 200 litigations and has provided expert testimony in over 10 cases.

He is a Florida state licensed Certified General Contractor (CGC), Mold Assessor (MRSA), Mold Remediator (MRSR), and Home Inspector (HI), as well as a Board Certified Indoor Environmental Consultant (CIEC) through ACAC. Mr. Mulholland proudly served in the USMC as a sniper and reached the rank of Sergeant.



SCOTT MULHOLLAND, HI MRSA MRSR CIE BEC

President

Scott has worked side by side with his father, Spiderman Mulholland, for over 15 years and has worked his way up from running supplies and materials to assuming the responsibility of performing forensic investigations, project management, staff oversight and so much more. The close working relationship with his father, coupled with professional training and certifications, has made Scott a premier building envelope forensic investigator. Whether it's a large-scale commercial project or a residential issue, Scott has the skills and knowledge to complete the task.



SCOTT STEPHEN, BEC EDI MWC

Vice President

Scott Stephen is a building envelope consultant with over 20 years' experience providing consulting and forensic testing services for residential, commercial and high rise structures. Mr. Stephen has held a Florida Roofing Contractor license and currently serves as an instructor for the Building Envelope Science Institute and the Exterior Design Institute. Mr. Stephen developed ReportMakerPRO reporting software and inspection templates that are currently being used by consultants all across the United States and assisted in the development of an inspection

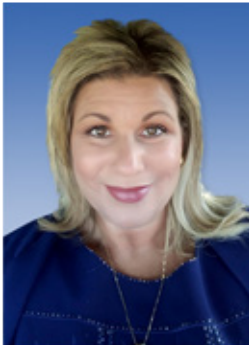
protocol and reporting system for a national class action lawsuit settlement for an EIFS manufacturer which is currently one of the most used stucco inspection templates in the US. Scott excels at marrying hands-on field expertise with practical administration solutions.



TINA MULHOLLAND

CFO

Tina is responsible for directing the fiscal functions of the company. She analyzes budgets, financial reports and financial trends in order to assist the CEO and President. Her involvement with all team members to ensure accuracy in invoicing and budget maintenance is vital to the continued growth of our company.



SUSIE BLANCHARD, MS

Executive Director

Susie is the personal assistant to the CEO and President and is responsible for overseeing the administration, programs and strategic plans of the corporation. She is the first point of contact for incoming projects and maintains client communication to completion through scheduling, invoicing support and vendor compliance.

EXECUTION

Mr. Mulholland took the stunning attention to detail that was instilled in him as a Senior Scout Sniper Instructor for the United States Marine Corp, coupled it with relentless drive and tenacity, and transformed those dynamics into a powerhouse company that can diagnose, design, implement, and oversee any construction related issue.

With almost three decades of experience in residential, commercial, and high-rise commissioning, Mr. Mulholland founded and acts as the CEO of US Building Consultants, a company that has become an industry leader in quality control, forensic studies, moisture engineering, building envelope science, and failure analysis.

US Building Consultants consistently commissions new buildings with zero litigation or water intrusion issues and has overseen billions of dollars in new construction projects without a single building envelope failure, a claim rarely heard in the industry. Mr. Mulholland, with his staff, network, and industry resources, continue to provide services, training and expert consulting to those in the construction industry.

OUR SERVICES

WATER INTRUSION ANALYSIS

INDOOR AIR QUALITY
ANALYSIS

EXPERT TESTIMONY AND
REPORTING

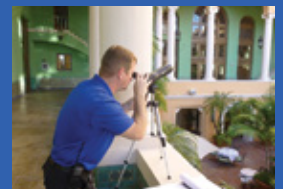
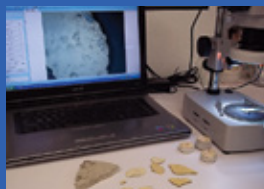
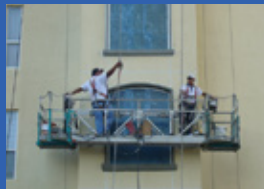
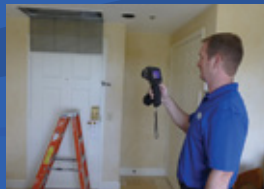
CONSTRUCTION
MANAGEMENT

CONSTRUCTION DEFECT
FORENSIC INVESTIGATIONS

BUILDING ENVELOPE
COMMISSIONING

STRUCTURAL ENGINEERING

INSURANCE CLAIMS ANALYSIS



WATER INTRUSION ANALYSIS

Our professional staff that includes trained rappel specialists, in conjunction with advanced technology and state-of-the-art equipment, investigates and then remediates our clients' water intrusion issues.

Proven protocols, sophisticated equipment, exceptional testing methods, and nearly three decades of experience with residential, commercial, and high-rise facilities save our clients millions in capital resources. An extensive background and unique insight into water intrusion analysis, provides USBCI with an identification and remediation success rate unrivaled in the industry.

In addition to accurate assessments and effective problem resolution, our clients receive detailed forensic reports that outline each water intrusion issue location and a thorough remediation plan to correct the issue.



INDOOR AIR QUALITY

USBCI has investigated, analyzed, decontaminated, and overseen remediation on some of the biggest mold claims in the Southeastern United States.

USBCI uses advanced protocols, mobilized laboratory equipment, and partners with nationally accredited laboratories for testing to ensure that our clients' indoor air quality concerns are properly identified and addressed. USBCI provides the proper remediation the first time, and a concentrated effort so our clients' mold problems will not become a recurring issue.

Under normal conditions, mold is only a symptom of a much larger problem, typically water intrusion and/or insufficient moisture removal from the mechanical systems. Extensive knowledge of the causes of mold issues and utilization of specialized protocols to combat these issues makes USBCI an industry leader in mold remediation.





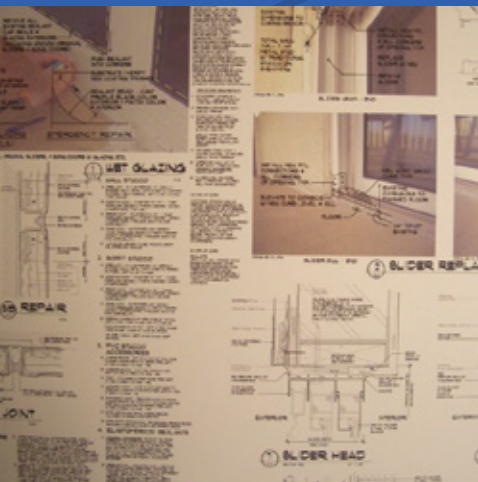
CONSTRUCTION EXPERT WITNESS

Extensive construction background, experience, and familiarity with industry standards and practices are all required for an effective expert witness. US Building Consultants provides expert witness services that are based on fact and backed up by detailed testing, analysis and reports that include libraries of photographic evidence.

Our experts have a well-rounded resume of construction litigation cases, so our clients can be assured they are getting qualified professionals who provide a powerful testimony that is both confident and accurate.

USBCI is unique because of our use of forensic evidence and data to bring the facts to the forefront, rather than relying on walk-through inspections or testing from other professionals to make our claims.

USBCI's experience in hundreds of construction litigation cases proves we have the tools, resources, and experience to bring any construction litigation case or claim to a successful resolution.



CONSTRUCTION MANAGEMENT

Every project warrants special consideration for uniqueness, cost, priority, and duration of construction.

To make certain our client's projects are completed on time, every time, USBCI uses five (5) core processes of project management: initiation/planning, bid process, execution, controlling & monitoring (quality control), and close-out.

USBCI clearly identifies and establishes the project objectives, scope, team members, and deliverables. Resources are coordinated and the plan is executed. The quality standards relevant to the project are identified, a quality control program is established to ensure the project will meet such standards, and the overall project performance is evaluated on a regular basis.

The project is brought to an orderly conclusion once all defined project requirements are completed and the project's deliverables have been accepted, final inspection and certification is completed, and the close-out documents (i.e. acceptance, maintenance documents, warranties, etc.) are finalized.



WDR PROGRAM

The WDR (Waterproofing Design and Restoration) Program designed by US Building Consultants implements an all-inclusive, time-conscious approach to building envelope restoration with a vital adherence to industry specs and standards. USBCI will use its vast knowledge, experience and expertise to take your restoration project from conception to completion. We provide an immediate forensic diagnosis and coordinate architects, engineers, and construction managers to fast-track the start of your project. USBCI presents ongoing forensics during the restoration process through open discovery and daily or weekly inspections while harmonizing the tasks of the other professionals involved so that our clients can experience a fully informed, hassle-free restoration completion.



We offer a detailed set of plans, negotiate with bidders, provide computerized cost estimates, develop contracts and service agreements, certify all completed work and top it off with warranties of ten to twenty years. USBCI is hands-on so that our clients don't have to be.



BUILDING ENVELOPE COMMISSIONING

USBCI understands that at the core of high-quality design and moisture engineering controls is the ability to recognize and respond to design failures of all kinds before construction commences, preventing costly remediation or lawsuits. Nearly three decades of forensic experience has allowed us to get uniquely familiar with building envelope systems, and USBCI has overseen billions of dollars in new construction without a single building envelope failure.

USBCI strives to remain on the cutting edge of building envelope technology, providing the most advanced, cost-effective, and reliable solutions to their construction projects. These efforts have developed into our comprehensive building envelope commissioning process, from the pre-design phase through the construction phase and completion.

USBCI provides plan reviews, detail development and quality control inspections to deliver quality waterproofing techniques and comprehensive construction expertise that ensures the success of your project, preventing future water intrusion and litigation issues. Our expertise and formulated protocols are unparalleled and makes certain your building's life-cycle is maximized. The more costly alternative to proper building envelope commissioning is our exclusive Waterproofing Design and Restoration Program, specifically designed for existing buildings.



ASTM STANDARD TESTING





CONSTRUCTION FAILURE/DEFECT ANALYSIS

Construction failures may be the product of many different issues, but without testing and careful investigation, those causes may never be found. Our professionals have the equipment, resources, experience, and expertise to accurately diagnose the causes and provide cost-effective solutions that will maximize your building's life-cycle.

Nearly thirty years of investigation, testing and analysis of construction failure and defects provides a perspective that leaves our clients with a peace-of-mind. Facts cannot be argued, so we utilize every resource, from cutting-edge equipment to a diversified team of experts, to bring those scientific facts to light.

Clients are confident that our reports are based on indisputable evidence identified through detailed analysis of on-sight testing and laboratory testing. USBCI has developed effective protocols and methodologies to recognize and provide cost-effective remediation solutions.



NATURAL DISASTERS

Natural disasters are considered major adverse events that can cause damage to structures ranging from minor to catastrophic levels. For those who have experienced these events, USBCI provides the necessary services to get their structure(s) repaired and insurance claims handled with minimal operational interruptions.

USBCI professionals have been located in Florida for over thirty years and have provided services throughout the nation in areas devastated by natural disasters.

Our professionals have many decades of experience in dealing with the aftermath of natural disasters, while providing critical engineering and forensic investigation services that help protect your assets and expedite the recovery process; the goal is to make our clients whole once again.

USBCI can handle the entire process from the inspection, emergency repairs and insurance claims to remediation.

MOISTURE ENGINEERING & SYSTEM CONTROLS

Whether our clients need a new design, remodel, or renovation, USBCI has the expertise to take their project from concept to completion. Our experts specialize in a wide array of engineering services including mechanical systems analysis and design; electrical and structural design; design and plan review for new construction; inspections; and plans preparations.

Our forensic engineering services are provided by qualified professionals with extensive experience in design, code analysis and construction methods for both new and renovated projects, providing detailed, accurate assessments backed by thorough field examination and scientific data.

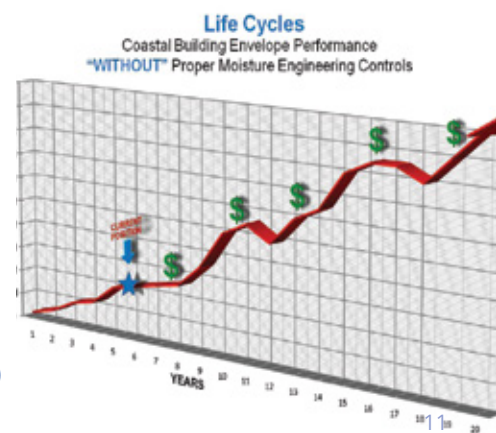
As with all client projects, small and large, detailed investigation and thorough examination are conducted through extensive field assessments. Cause as to the problem, as with solutions and remedies presented to the client are based upon our expertise and years of experience in the engineering and construction field. This experience is presented to our clients in providing economical and steadfast solutions.



FACILITIES & INFRASTRUCTURE

Managers and owners of buildings, facilities or critical infrastructure face the challenges of aging assets, increased maintenance/service expectations and asset utilization combined with a challenging economic period. USBCI offers cost-effective solutions to assist the managers/owners with the management of the whole life-cycle (design, construction, commissioning, maintaining, repairing, modifying, replacing, and disposal) of physical and infrastructure assets. Some of the services that USBCI offers are:

- Code Compliance
- Fire / Life Safety
- Efficiency and Performance Improvement Consulting
- Capital Improvements
- Life-cycle Assessments/Studies
- Maintenance Strategy
- Indoor Air Quality Assurance & Remediation
- Engineering (Structural/Mechanical) Services
- Construction Services (i.e. building envelope commissioning, construction management)



PORTOFINO CONDOMINIUMS

Building Envelope Consultant and project manager for Towers 1,2, and 3 from 2004 to 2006. Provided plan review, ASTM testing, forensic studies, material analysis, water testing and analysis, inspections, and final sign-off for waterproofing and building envelope components.

Responsible for overseeing hurricane repairs of approximately 30 million dollars. Performed forensic investigations for building envelope damages, environmental protocols in conjunction with Bennett Shuman AIA, conducted mold sampling, laboratory analysis, final clearance testing with quality control of the building reconstruction.



DISNEY WORLD

2003 Pop Center - Existing construction. Performed forensic investigation, testing and analysis of building components. Conducted environmental analysis, and analysis. Conducted chemical and laboratory analysis, designed details for repairs to correct the environmental conditions for Disney World and the construction company.

2003 Centex Rooney Construction - Forensic investigation, testing and analysis of failures for new construction. Conducted testing of building components, material sampling, analysis and designed details with specifications for the corrective repairs to Disney World and the construction company.



BEACH COLONY RESORT

Building envelope consulting and construction management for repairs of 18 & 20-story towers after Hurricane Ivan. Existing construction consisting of conventional stucco and Exterior Insulation Finish System (EIFS). Performed forensic analysis, moisture intrusion survey, damage assessment, water testing, Infrared analysis, environmental testing and analysis, reporting, and expert witness services.

Specified repairs, provided blueprints in conjunction with Bennett Shuman AIA, conducted the bid process, awarded contracts, and provided construction management and oversight for approximately 10 million dollars in repairs.

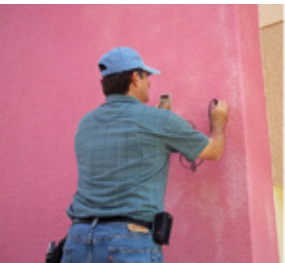




PLAZA TOWER

Fifty-story, existing office building constructed of granite pre-cast panels with metal cladding. Forensic building investigation for water intrusion and environmental testing and analysis. Conducted extensive building envelope study of the design and function of the structure, moisture analysis, water intrusion investigation, ASTM/AAMA field tests, damage assessment, and designed scope for work for repairs and restoration.

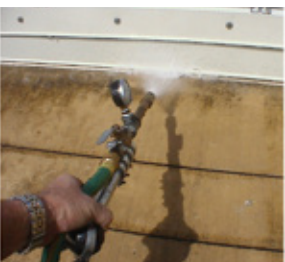
Performed consulting services (third-party quality assurance) during the repairs and restoration of the building. Provided testimony during deposition as an expert witness.



VACATION RESORT, MEXICO

Existing construction consisting of seventeen adjoining buildings with a continuous tunnel under all buildings. Provided building envelope consulting and construction management for waterproofing conciliation. Performed building envelope review, testing, AAMA water examination and analysis of both above and below-grade construction components.

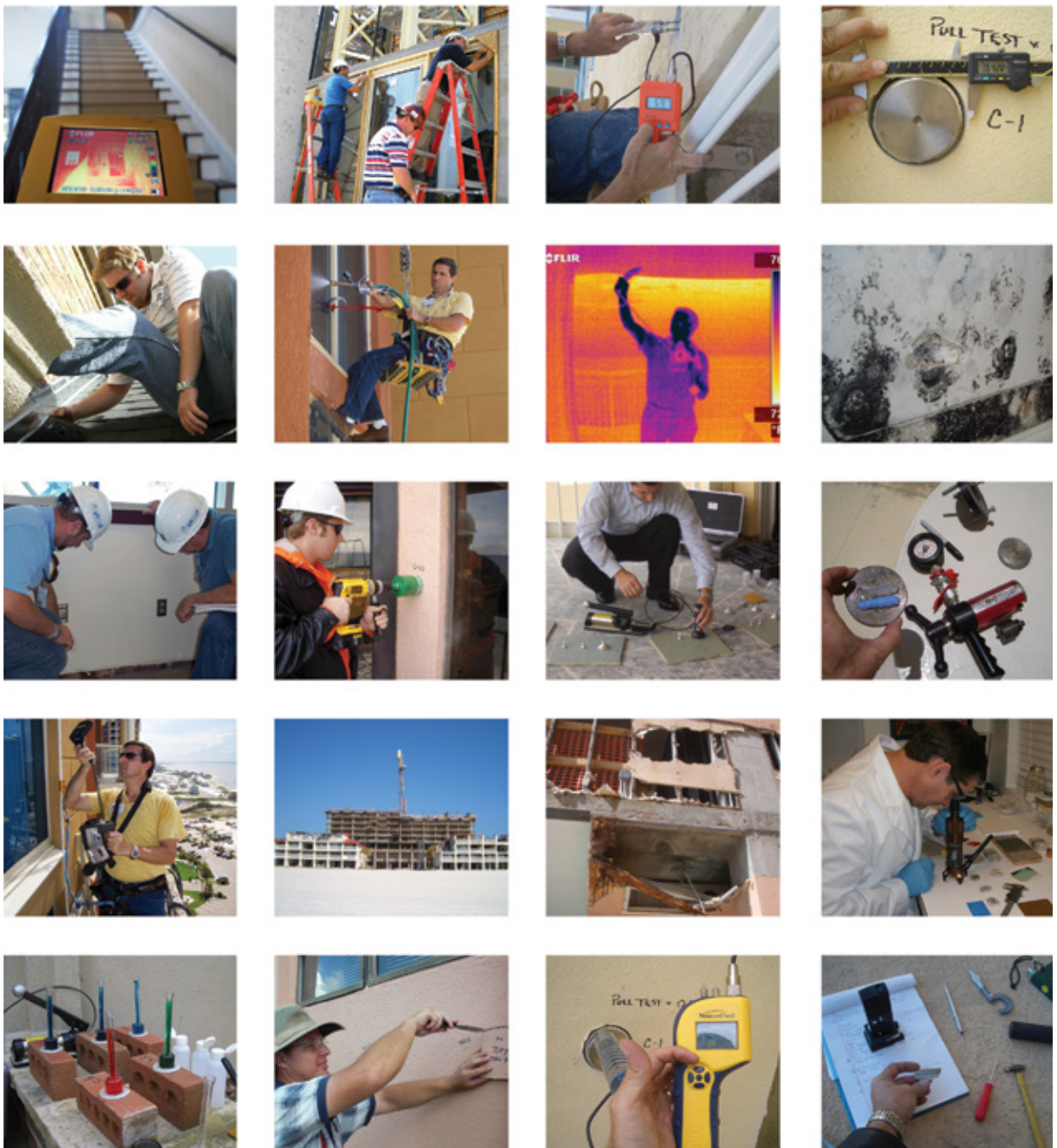
Preformed construction management services providing details, plans and specifications for waterproofing conciliation for above and below-grade; bid documents; mock-up examinations; material selection and testing; quality control; site visits and project status reports; warranties; and close-out and acceptance documents.



ROYAL PALM OFFICE BUILDING

New construction of a twelve story office building. The exterior cladding system consisted of an Exterior Insulation Finish System (EIFS). Provided building envelope consulting and construction management for the owner during the construction of the office building.

Conducted forensic investigation, testing and analysis, moisture intrusion survey, ASTM and AAMA standards testing, and third-party consulting. Provided in-place mock-ups for quality control. Performed plan reviews, on-site inspections, water testing, oversight and quality assurance during construction, final inspection and sign-off.



USBCI comes equipped to handle any job, large or small, and sits on the cutting edge of technology in the construction industry. Our forensic investigations and expert reporting provide the kind of thorough analysis required to solve any building issue. USBCI utilizes advanced testing methods that reach the core of a construction failure or defect, analyze the results, and then provide our clients with a cost-effective solution to the problem.

OUR CLIENTS

USBCI works with a variety of clients and partners, including property managers, building owners, insurance companies, law firms, and construction companies, to solve any kind of building envelope issues. Our philosophy is to foster relationships with each of our clients to ensure quality of work and create long-lasting connections.

- Ocean Properties, Ltd.
- First Service Residential
- Hensel Phelps Construction Co
- The Hogan Group, Inc.
- White-Spunner Construction
- Everest RE Group, Ltd.
- State Farm
- Eclipse Aviation
- Turner Construction
- Western Waterproofing Company
- Perry roofing Contractors
- BL Harbert International
- Rimkus Consulting Group
- Barkett Kenny Incorporated
- Joyner Construction Inc.
- Davis Properties of Northwest Gainesville
- Exclusive Resorts
- DOW Corning
- Duke Realty
- Allstate
- Holiday Inn
- Kustom
- AMJ Inc.
- Embassy Suites Hotels
- Ford Drywall & Stucco
- Charles Perry Partners, Inc.
- Bed Bath & Beyond
- QBE
- RSR Group
- Comfort Inn
- YMCA
- Robinshore Incorporated
- Lloyd's of London
- American Restoration Inc.
- Miller Construction Company
- Western Union
- Beach Colony Resort
- Bosshardt Realty Services
- Value Place
- Portofino Island
- Green, Ackerman and Frost, P.A.
- The Villages
- The Yacht Club of Terry Cove
- Moody, Salzman and Lash
- Thoornhill Law Firm
- The Orthopaedic Institute
- Alachua County Florida



Developing cost-effective solutions to your building envelope problems

PHONE: 352.505.6771 | TOLL FREE: 888.44.USBCI | FAX: 321.244.0228
www.USBuildingConsultants.com | info@usbuildingconsultants.com